

Product Training/Guidance Manual



INDEX

[Sculptural Lighting Collection](#)

[Premium Audio Collection](#)

[Design-Led Alarm Clock Collection](#)

[Cool Summer Collection](#)

Sculptural Lighting Collection

- [Amber Crystal Light](#)
- [Atlas Globe Lamp](#)
- [Twist Hexagon Lamp](#)
- [Super Mini & Mini Alice Mushroom Lamp](#)
- [Large Alice Mushroom Lamp](#)
- [Smart LunaSpin Lamp](#)
- [Smart Football Lamp](#)
- [Smart Origami Lamp](#)
- [Mini Lemelia Light](#)
- [Large Lemelia Light](#)
- [Smart Moon Lamp](#)
- [Smart Galaxy Lamp](#)
- [Smart Book Light](#)
- [Mini Pentagon Desk Bulb](#)
- [Large Pentagon Desk Bulb](#)
- [Dragonflight Balance Light](#)
- [Evaro Lightbulb Lamp](#)
- [Smart Diffuser Lamp](#)
- [Velvet Accordion Lamp](#)
- [Wooden Accordion Lamp](#)
- [Smart Baton Light](#)
- [Octagon One Desk Light](#)
- [Octagon One Plus Desk Light/ Alarm Clock](#)

AMBER CRYSTAL LIGHT



MAIN SELLING FEATURES

- Sustainably source walnut wood and crystal
- A stunning feature lamp which gives off a relaxing warm glow
- 12 highly detailed laser engraved designs to choose from
- USB-C rechargeable
- Touch controlled
- 3 options of brightness levels

DISPLAY SET UP GUIDE

- For the most effective look, we advise displaying a fully charged unit in a dark space.
- This is a tactile product designed to be moved around at different angles to appreciate the detail within each design. This can mean that it will show the fingerprints can be collected throughout the day so we advise wiping down with a microfiber cloth daily.
- We advise that the device is regularly charged to ensure a great display impact in store every day. Having one device on charge and one on display that can easily be swapped round is a great way to ensure this.

FAQ/PRODUCT CARE NOTICE

- Please note that the base and crystal ball are not attached so please handle with care when moving it around.
- We advise keeping this product out of direct sunlight.

ATLAS GLOBE LAMP



MAIN SELLING FEATURES

- Sustainably source walnut or white ash wood
- The globe is made from high quality scratch resistance ABS material
- USB-C rechargeable
- Touch controlled
- Dimming feature
- Magnifier included with the product

DISPLAY SET UP GUIDE

- For the most effective look, we advise displaying a fully charged unit in a dark space alongside with the larger or mini design.
- This is a tactile product designed to be remove from base and interact with.
- We advise that the device is regularly charged to ensure a great display impact in store every day. Having one device on charge and one on display that can easily be swapped round is a great way to ensure this .

FAQ/PRODUCT CARE NOTICE

- Please note that the base and AtlasGlobe are not attached so please handle with care when moving around.
- Should you need to dust the product, the product can be wiped down with a damp cloth.

TWIST HEXAGON LAMP



SELLING FEATURES

- A beautiful ambient light which gives off softly diffused warm glow
- Casing is made from high quality scratch resistance ABS material
- Made with tearproof, water resistance and durable Tyvek paper
- USB-C rechargeable
- Touch controlled
- Dimming feature
- Light is height adjustable, can be adjusted between 3 levels

DISPLAY SET UP GUIDE

- We advise displaying a fully charged unit open in a dark space.
- We advise that the device is regularly charged to ensure a great display impact in store every day. Having one device on charge and one on display that can easily be swapped round is a great way to ensure this.

FAQ/PRODUCT CARE NOTICE

- Should you need to dust the product, the Tyvek paper is OK to be wiped down with a damp cloth.
- For a full charge, please make sure that the Twist Hexagon Lamp is closed.
- Activate the dimming feature by holding down the touch button on the top of the lamp.

SUPER MINI & MINI ALICE MUSHROOM LAMP



MAIN SELLING FEATURES

- Sustainably source walnut or white ash wood
- Lamp shade is made from durable ABS material
- USB-C rechargeable
- Touch controlled
- Includes a rotation of 7 colours
- LED lightbulb to ensure a long lasting and energy efficient lighting solution for any living space

DISPLAY SET UP GUIDE

- We advise displaying a fully charged item alongside the large design with one on the warm light setting and the other on the rotation of colours to best show product features.
- We advise that the device is regularly charged to ensure a great display impact in store every day. Having one device on charge and one on display that can easily be swapped round is a great way to ensure this.

FAQ/PRODUCT CARE NOTICE

- This design is controlled by the copper button and tapping the mushroom top. The copper button turns the device on and then you can utilise the tapping function. The first tap gives you your warm light, the second tap starts the rotation of 7 colours and the third tap will pause the colour of your choice.

LARGE ALICE MUSHROOM LAMP



MAIN SELLING FEATURES

- Made with sustainably sourced walnut or white ash solid wood and highly durable ABS
- A beautiful ambient light which gives off softly diffused warm glow
- Touch controlled
- Includes a rotation of 7 colours
- Dimming feature

DISPLAY SET UP GUIDE

- This design is mains operated so will need to be displayed near to a plug socket.
- We advise displaying this alongside the mini design with one on the warm light setting and the other on the rotation of colours to best show product features.

FAQ/PRODUCT CARE NOTICE

- This design is controlled by tapping the copper button only. The first tap gives you your warm light, the second tap starts the rotation of 7 colours and the third tap will pause the colour of your choice. The larger design also has a dimming feature which is activated by holding down the copper button.

Smart LunaSpin Lamp



MAIN SELLING FEATURES

- Made with sustainably sourced walnut wood and 3D printed PLA
- Includes 3 different light settings (warm white, cool white, warm yellow)
- Touch, tap or remote controlled
- The Moon Globe shall continue to work separately if/when removed from the base unit
- The walnut base is wireless charging via USB-C
- Dimming feature

DISPLAY SET UP GUIDE

- We recommend displaying a fully charged item alongside the large or mini design on the warm white light setting and the other on cool white light setting to best show product features
- We do recommend displaying with the POS provided. This will help the customer to better understand the product and function.

FAQ/PRODUCT CARE NOTICE

- This design can be controlled in 3 ways, by touching the touch control button on the bottom of the LunaSpin Lamp, the remote control or tapping the top of the LunaSpin Lamp.

Smart FootballSpin Lamp



MAIN SELLING FEATURES

- Made with sustainably sourced walnut wood and 3D printed PLA
- Includes 3 different light settings (warm white, cool white, warm yellow)
- Touch, tap or remote controlled
- The Football Globe shall continue to work separately if/when removed from the base unit
- The walnut base is wireless charging via USB-C
- Dimming feature

DISPLAY SET UP GUIDE

- We recommend displaying a fully charged item alongside the large or mini design on the warm white light setting and the other on cool white light setting to best show product features.
- We do recommend displaying with the POS provided. This will help the customer to better understand the product and function.

FAQ/PRODUCT CARE NOTICE

- This design can be controlled in 3 ways, by touching the touch control button on the bottom of the FootballSpin Lamp, the remote control or tapping the top of the FootballSpin Lamp.

SMART ORIGAMI LAMP



MAIN SELLING FEATURES

- Made with sustainably sourced walnut or bamboo solid wood and tearproof, water resistance and durable Tyvek Paper
- USB-C rechargeable
- Magnetic handle & cover allowing different placements of the design in 360 display or table lantern display

DISPLAY SET UP GUIDE

- We advise displaying 2 fully charged unit open into different design in a dark space.
- We advise that the device is regularly charged to ensure a great display impact in store every day. Having one device on charge and one on display that can easily be swapped round is a great way to ensure this.
- We Recommend to display with POS to show how many design you can make with the Smart Origami Lamps.

FAQ/PRODUCT CARE NOTICE

- Should you need to dust the product, the Tyvek paper is OK to be wiped down with a damp cloth.
- For a full charge, please make sure that the Origami Lamp is closed.

MINI LEMELIA LIGHTS



MAIN SELLING FEATURES

- Made with sustainably sourced solid wood and highly durable frosted acrylic
- A beautiful ambient light which gives off softly diffused warm glow
- USB-C rechargeable
- Touch controlled
- Includes a rotation of 7 colours

DISPLAY SET UP GUIDE

- We advise displaying a fully charged item alongside the larger design with one on the warm light setting and the other on the rotation of colours to best show product features.
- We advise that the device is regularly charged to ensure a great display impact in store every day. Having one device on charge and one on display that can easily be swapped round is a great way to ensure this.

FAQ/PRODUCT CARE NOTICE

- This design is controlled by tapping the wooden top. The first tap gives you your warm light, the second tap starts the rotation of 7 colours and the third tap will pause the colour of your choice.
- When you first received the products, there might some acrylic dust on the products. Please use a cloth to remove dust if necessary.

LARGE LEMELIA LIGHTS



MAIN SELLING FEATURES

- Made with sustainably sourced solid wood and highly durable frosted acrylic
- A beautiful ambient light which gives off softly diffused warm glow
- USB-C rechargeable
- Touch controlled
- Includes a rotation of 7 colours
- Dimming feature

DISPLAY SET UP GUIDE

- We advise displaying a fully charged item alongside the mini design with one on the warm light setting and the other on the rotation of colours to best show product features.
- We advise that the device is regularly charged to ensure a great display impact in store every day. Having one device on charge and one on display that can easily be swapped round is a great way to ensure this.

FAQ/PRODUCT CARE NOTICE

- This design is controlled by tapping the wooden top. The first tap gives you your warm light, the second tap starts the rotation of 7 colours and the third tap will pause the colour of your choice. The larger design also has a dimming feature which is activated by holding down the wooden top.
- When you first received the products, there might some acrylic dust on the products. Please use a cloth to remove dust if necessary.

SMART MOON LAMP



MAIN SELLING FEATURES

- Includes 3 different light settings (warm white, cool white, warm yellow)
- Made with 3D printed PLA and sustainably sourced natural wood
- A unique, mesmerising sculptural statement piece
- Discrete touch controlled buttons

DISPLAY SET UP GUIDE

- This design is mains operated so will need to be displayed near to a plug socket.

FAQ/PRODUCT CARE NOTICE

- This can take a bit of practise to levitate. We advise cradling the 3D printed moon around the magnet and hovering over the centre of the base. Once the light stops flickering you'll feel the force of the magnet and the moon will then levitate. Please see the link below for our instruction video.

<https://vimeo.com/556187089>

SMART GALAXY LAMP



MAIN SELLING FEATURES

- Includes 3 different light settings (warm white, cool white, warm yellow)
- Made with 3D printed PLA and sustainably sourced natural wood
- A unique, mesmerising sculptural statement piece
- Discrete touch controlled buttons

DISPLAY SET UP GUIDE

- This design is mains operated so will need to be displayed near to a plug socket.

FAQ/PRODUCT CARE NOTICE

- This can take a bit of practise to levitate. We advise cradling the 3D printed moon around the magnet and hovering over the centre of the base. Once the light stops flickering you'll feel the force of the magnet and the moon will then levitate. Please see the link below for our instruction video.

<https://vimeo.com/556187089>

SMART BOOK LIGHT



MAIN SELLING FEATURES

- A striking compact design with a warm ambient glow and a true wow factor
- Made with sustainably sourced natural wood, fibre leather or linen fabric with tear proof Tyvek Paper
- USB-C rechargeable
- Magnetic cover which allow you to fold it in a full 360 degrees, creating the perfect ambiance for any occasion

DISPLAY SET UP GUIDE

- We advise displaying a fully charged unit open and lay flat or stood up vertically. This looks very effective when displayed alongside a unit of a different size.
- We advise that the device is regularly charged to ensure a great display impact in store every day. Having one device on charge and one on display that can easily be swapped round is a great way to ensure this.

FAQ/PRODUCT CARE NOTICE

- Should you need to dust the product, the Tyvek paper is OK to be wiped down with a damp cloth (however, you shouldn't need to do this often as the book is turned off by closing).
- For a full charge, please make sure that the book is closed.

MINI PENTAGON DESK BULB



MAIN SELLING FEATURES

- Made with sustainably sourced solid wood and highly durable frosted acrylic
- A beautiful ambient light which gives off softly diffused warm glow
- USB-C rechargeable
- Touch controlled
- Includes a rotation of 7 colours

DISPLAY SET UP GUIDE

- We advise displaying a fully charged item alongside the larger design with one on the warm light setting and the other on the rotation of colours to best show product features.
- We advise that the device is regularly charged to ensure a great display impact in store every day. Having one device on charge and one on display that can easily be swapped round is a great way to ensure this.

FAQ/PRODUCT CARE NOTICE

- This design is controlled by tapping the wooden top. The first tap gives you your warm light, the second tap starts the rotation of 7 colours and the third tap will pause the colour of your choice.
- When you first received the products, there might some acrylic dust on the products. Please use a cloth to remove dust if necessary.

LARGE PENTAGON DESK BULB



MAIN SELLING FEATURES

- Made with sustainably sourced solid wood and highly durable frosted acrylic
- A beautiful ambient light which gives off softly diffused warm glow
- USB-C rechargeable
- Touch controlled
- Includes a rotation of 7 colours
- Dimming feature

DISPLAY SET UP GUIDE

- We advise displaying a fully charged item alongside the mini design with one on the warm light setting and the other on the rotation of colours to best show product features.
- We advise that the device is regularly charged to ensure a great display impact in store every day. Having one device on charge and one on display that can easily be swapped round is a great way to ensure this.

FAQ/PRODUCT CARE NOTICE

- This design is controlled by tapping the wooden top. The first tap gives you your warm light, the second tap starts the rotation of 7 colours and the third tap will pause the colour of your choice. The larger design also has a dimming feature which is activated by holding down the wooden top.
- When you first received the products, there might be some acrylic dust on the products. Please use a cloth to remove dust if necessary.

DRAGONFLIGHT BALANCE LIGHT



MAIN SELLING FEATURES

- Made with sustainably sourced solid walnut or maple wood
- A beautiful ambient light which gives off softly diffused warm glow under the dragonfly wings
- The dragonfly light is able to balance on any surfaces
- USB-C rechargeable
- Touch button controlled
- 4 level of light brightness

DISPLAY SET UP GUIDE

- We advise displaying a fully charged item in a dark space.
- We advise that the device is regularly charged to ensure a great display impact in store every day. Having one device on charge and one on display that can easily be swapped round is a great way to ensure this .

FAQ/PRODUCT CARE NOTICE

- You can change the light level by tapping the touch button on the top of the dragonfly.
- Please note that the base and dragonfly are not attached so please do not carry it by the base only with the dragonfly is rested on top as it could damage the dragonfly if dropped.
- Should you need to dust the product, the Dragonflight Balance Light can be wiped down with a damp cloth.

EVARO LIGHTBULB LAMP



MAIN SELLING FEATURES

- Made with iron and ABS in walnut or black finishing
- A beautiful ambient light which gives off softly diffused warm glow
- A unique, mesmerising sculptural statement piece
- Discrete touch controlled buttons

DISPLAY SET UP GUIDE

- This design is mains operated so will need to be displayed near to a plug socket.
- We advise displaying the item in a dark space.

FAQ/PRODUCT CARE NOTICE

- You should feel a click when the lightbulb is secure and levitating. Please see the link below for our instruction video.

https://www.youtube.com/watch?v=hKPk1dJ-_XI&t=6s

- Please take extra care when the the lightbulb is levitating, the lightbulb should just re-attach back to the lamp stand if the power cuts off or accidental knocked over.

SMART DIFFUSER LAMP



MAIN SELLING FEATURES

- Made with sustainably sourced walnut or white ash wood, highly durable frosted acrylic and copper
- A beautiful ambient light which gives off softly diffused warm glow
- Touch controlled with 3 level of light brightness
- Diffuser automatic shut off after 45 minutes as a safety feature
- The diffuser and the lamp can be operated separately
- USB Rechargeable

DISPLAY SET UP GUIDE

- We advise displaying a fully charged item in a dark space.
- We advise that the device is regularly charged to ensure a great display impact in store every day. Having one device on charge and one on display that can easily be swapped round is a great way to ensure this .

FAQ/PRODUCT CARE NOTICE

- This design is controlled by tapping the copper button on the front, ..quick tap to change the light and Press & Hold for 3-5 seconds to activate the Diffuser (The blue LED indication light will turn on at the back of the lamp when diffuser is activated).
- Our diffuser should only be used with pure essential oil.
- When you first received the products, there might some acrylic dust on the products. Please use a cloth to remove dust if necessary.
- Please do not touch the copper plate when the diffuser is turned on as it will be very hot.

VELVET ACCORDIAN LAMP



MAIN SELLING FEATURES

- A striking compact design with a warm ambient glow and a true wow factor
- Made with sustainably sourced velvet covered natural wood with tear proof Tyvek Paper
- USB-C rechargeable
- Includes 3 different light settings (cool white, warm yellow or interchanging between cool white, warm yellow)
- Magnetic covers and lanyard included
- 4 beautiful design printed on the Tyvek Paper

DISPLAY SET UP GUIDE

- We advise displaying a fully charged item in a dark space.
- We advise that the device is regularly charged to ensure a great display impact in store every day. Having one device on charge and one on display that can easily be swapped round is a great way to ensure this.
- Recommend to display with supplied POS to show how many design you can create with the accordion lamps.

FAQ/PRODUCT CARE NOTICE

- Open and Close the covers of the Accordion Lamp to change between the light modes.
- Should you need to dust the product, the Tyvek paper is OK to be wiped down with a damp cloth.

WOODEN ACCORDIAN LAMP



MAIN SELLING FEATURES

- A striking compact design with a warm ambient glow and a true wow factor
- Made with sustainably sourced natural wood with tear proof Tyvek Paper
- USB-C rechargeable
- Includes 3 different light settings (cool white, warm yellow or interchanging between cool white, warm yellow)
- Magnetic covers and lanyard included

DISPLAY SET UP GUIDE

- We advise displaying a fully charged item in a dark space.
- We advise that the device is regularly charged to ensure a great display impact in store every day. Having one device on charge and one on display that can easily be swapped round is a great way to ensure this.
- Recommend to display with supplied POS to show how many design you can create with the accordion lamps.

FAQ/PRODUCT CARE NOTICE

- Open and Close the cover of the Accordion Lamp to change between the light modes.
- Should you need to dust the product, the Tyvek paper is OK to be wiped down with a damp cloth.

SMART BATON LIGHT



MAIN SELLING FEATURES

- A striking compact design with a warm ambient glow and a true wow factor
- Made with sustainably sourced natural wood with highly durable frosted acrylic.
- 2 Functions, Permanent Display for reading and torch light or Motion Sensor Mode; perfect for cupboards/ staircase/ bedside
- Adhesive magnetic covers, the Baton Light can be remove from the base
- USB Rechargeable

DISPLAY SET UP GUIDE

- We advise displaying a fully charged item in a dark space.
- We advise that the device is regularly charged to ensure a great display impact in store every day. Having one device on charge and one on display that can easily be swapped round is a great way to ensure this.

FAQ/PRODUCT CARE NOTICE

- Please note that the switch on top of the baton light are flick buttons, please do not press down on it as it will damage the switch.
- You may be able to remove the adhesive pad by using some heat on the base such as a hair dyer.

Octagon One Desk Lamp



MAIN SELLING FEATURES

- Made with aluminium and ABS
- A great reading lamp or desk light that you can angle in 4 different positions
- 4 light brightness setting
- USB rechargeable
- Discrete touch controlled buttons

DISPLAY SET UP GUIDE

- We advise displaying a fully charged item in a dark space.
- We advise that the device is regularly charged to ensure a great display impact in store every day. Having one device on charge and one on display that can easily be swapped round is a great way to ensure this.
- We do recommend displaying with the POS provide. This will help the customer to better understand the product.

FAQ/PRODUCT CARE NOTICE

- You can change the light level by tapping the top of the octagon one base.
- You can clean dust on the product with a damp cloth

Octagon One Plus Desk Lamp/ Alarm Clock



MAIN SELLING FEATURES

- Made with natural walnut, bamboo or cherry wood
- A great reading lamp and alarm clock that you can angle it in 4 different positions
- 4 light brightness setting
- USB rechargeable
- Discrete touch controlled buttons
- A choice of permanent display and sound activation for the alarm clock

DISPLAY SET UP GUIDE

- We advise displaying a fully charged item in a dark space.
- We advise that the device is regularly charged to ensure a great display impact in store every day. Having one device on charge and one on display that can easily be swapped round is a great way to ensure this.
- We do recommend displaying with the POS provided. This will help the customer to better understand the product and function.

FAQ/PRODUCT CARE NOTICE

- You can change the light level/alarm clock setting by tapping the engraved buttons on the base of the Octagon One Plus.
- You can clean dust on the product with a damp cloth.

Premium Audio Collection

- [Mage See-Through Bluetooth Speaker](#)
- [Drum Light Bluetooth Speaker](#)
- [Tumbler Selfie Bluetooth Speaker](#)
- [Mini Halo One Bluetooth Speaker](#)
- [Large Halo One Bluetooth Speaker](#)
- [MI Square Bluetooth Speaker](#)

MAGE SEE-THROUGH BLUETOOTH SPEAKER



MAIN SELLING FEATURES

- A sleek, minimal, portable and modern design with great sound quality
- Bluetooth connection
- Made with durable ABS and acrylic glass
- USB-C rechargeable
- TWS pairing function
- Touch controlled buttons
- Cleaning cloth included to remove fingerprints on speakers
- 3 warm white lighting level

DISPLAY SET UP GUIDE

- We advise displaying a fully charged unit connected to Bluetooth to show sound quality if possible.
- This is a tactile product designed to be touched. This can mean that fingerprints can be collected throughout the day so we advise wiping down with a cloth daily
- We advise that the device is regularly charged to ensure a great display impact in store every day. Having one device on charge and one on display that can easily be swapped round is a great way to ensure this

FAQ/PRODUCT CARE NOTICE

- The speaker cone on the speaker is a bit fragile, do not apply pressure or poke it as it will damage the speaker.

DRUM LIGHT BLUETOOTH SPEAKER



MAIN SELLING FEATURES

- Bluetooth connection
- Made with sustainably sourced bamboo, walnut or beech wood
- USB-C rechargeable
- TWS pairing function
- Light and Speaker in one, simply roll over to activate or deactivate the light
- Speaker is very portable and makes it perfect for picnics, camping and with outdoor activities

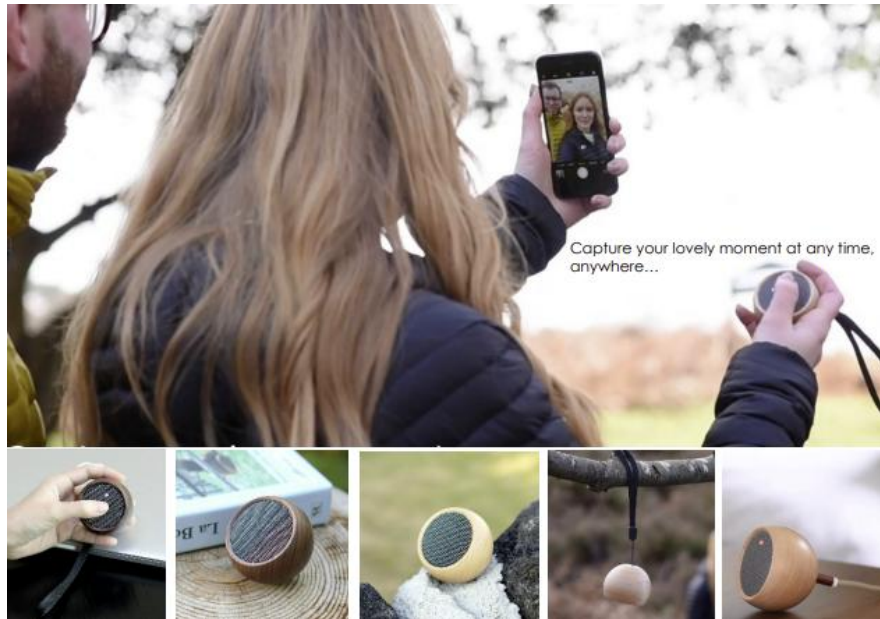
DISPLAY SET UP GUIDE

- We advise displaying a fully charged unit connected to Bluetooth to show sound quality if possible. This can either be displayed lay flat with the light on or stood up.
- We advise that the device is regularly charged to ensure a great display impact in store every day. Having one device on charge and one on display that can easily be swapped round is a great way to ensure this.

FAQ/PRODUCT CARE NOTICE

- To turn on just hold down the white button on the front of the speaker and connect through Bluetooth on your phone or laptop. Volume must be controlled by your device.

TUMBLER SELFIE BLUETOOTH SPEAKER



MAIN SELLING FEATURES

- Tumbler Selfie Speaker is very portable and makes it perfect for picnics, camping and with outdoor activities
- Bluetooth connection
- Made with sustainably sourced wood
- USB-C rechargeable
- TWS pairing function
- Discreet touch button and charging port
- Lanyard included
- The speaker can be use as a remote control to take selfies

DISPLAY SET UP GUIDE

- We advise displaying a fully charged unit connected to Bluetooth to show sound quality if possible. This can either be displayed lay flat or hung up.
- We advise that the device is regularly charged to ensure a great display impact in store every day. Having one device on charge and one on display that can easily be swapped round is a great way to ensure this.

FAQ/PRODUCT CARE NOTICE

- To turn it on just hold down the touch sensitive linen speaker and connect through Bluetooth on your phone or laptop. Volume must be controlled by your device.
- Double tap the button once it is connected to activate camera mode on your phone.
- To pair two units together, turn both units on and before connecting either to any Bluetooth device double press the power button of One the two units to start pairing. An Audible sound shall confirm successful connection, x 1 Unit shall have a solid White light and x 1 slowly flashing

MINI HALO BLUETOOTH SPEAKER



MAIN SELLING FEATURES

- An original, minimal and modern design with phenomenal sound quality
- Bluetooth or AUX connection
- Made with aluminium and ABS
- USB rechargeable
- TWS pairing function
- Touch and swipe control

DISPLAY SET UP GUIDE

- We advise displaying a fully charged unit connected to Bluetooth to show sound quality if possible.
- We advise that the device is regularly charged to ensure a great display impact in store every day. Having one device on charge and one on display that can easily be swapped round is a great way to ensure this.

FAQ/PRODUCT CARE NOTICE

- To turn on just hold down the touch button on the back of the speaker and connect through Bluetooth on your phone or laptop. Volume can be controlled by swiping the buttons on the back of the speaker.
- Should you need to dust the product, the Mini Halo Bluetooth Speaker can be wiped down with a damp cloth.

LARGE HALO BLUETOOTH SPEAKER



MAIN SELLING FEATURES

- A original, minimal and modern design with phenomenal sound quality
- Bluetooth, AUX or NFC connection
- Made with aluminium and ABS
- USB rechargeable
- Touch and swipe control

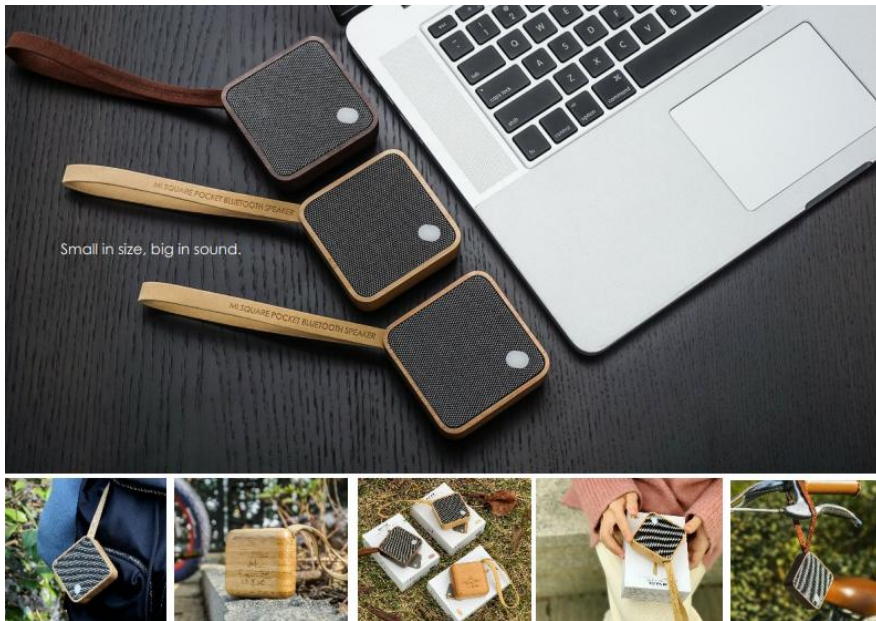
DISPLAY SET UP GUIDE

- We advise displaying a fully charged unit connected to Bluetooth to show sound quality if possible.
- We advise that the device is regularly charged to ensure a great display impact in store every day. Having one device on charge and one on display that can easily be swapped round is a great way to ensure this.

FAQ/PRODUCT CARE NOTICE

- To turn on just hold down the touch button on the back of the speaker and connect through Bluetooth on your phone or laptop. Volume can be controlled by swiping the buttons on the back of the speaker.
- Should you need to dust the product, the Large Halo Bluetooth Speaker can be wiped down with a damp cloth.

MI SQUARE SPEAKER



MAIN SELLING FEATURES

- A sleek, minimal, portable design with great sound quality
- Bluetooth connection
- Made with sustainably sourced wood
- USB-C rechargeable
- TWS pairing function
- Faux leather lanyard

DISPLAY SET UP GUIDE

- We advise displaying a fully charged unit connected to Bluetooth to show sound quality if possible. This can either be displayed lay flat or hung up with the faux suede strap.
- We advise that the device is regularly charged to ensure a great display impact in store every day. Having one device on charge and one on display that can easily be swapped round is a great way to ensure this.

FAQ/PRODUCT CARE NOTICE

- To turn on just hold down the white button on the front of the speaker and connect through Bluetooth on your phone or laptop. Volume must be controlled by your device.
- To pair two units together, turn both units on and before connecting either to any Bluetooth device double press the power button of One the two units to start pairing. An Audible sound shall confirm successful connection, x 1 Unit shall have a solid White light and x 1 slowly flashing

Design-Led Alarm Clock Collection

- [Flip Click Clock](#)
- [Cube Alarm Clock](#)
- [Brick Click Clock](#)
- [Edge Light Click Clock](#)

FLIP CLICK CLOCK



MAIN SELLING FEATURES

- A sleek minimal design for the bedside table
- Flip over to turn on and turn off the alarm.
- USB rechargeable with touch controlled
- A choice of permanent display and sound activation mode
- Made with sustainably sourced wood
- A choice of 12hr or 24hr display; long battery life up to 3 months in sound activated display.

DISPLAY SET UP GUIDE

- This design looks really effective displayed with multiple colour options. We recommend having one colour option on permanent display and another on sound activation mode to best demonstrate the features within this design.
- As this is a very interactive designs, we do recommend displaying with the POS which we will provide. This will help the customer to better understand the product.
- We advise that the device is regularly charged to ensure a great display impact in store every day. Having one device on charge and one on display that can easily be swapped round is a great way to ensure this.

FAQ/PRODUCT CARE NOTICE

- Setting the alarm, activating sound activation and snoozing the alarm are all controlled by the touch buttons.
- To turn the alarm off you will need to flip the clock and you'll see the time magically correct itself. To reset the alarm you will need to flip the clock back over again. To confirm that the alarm is set, you will notice a dot next to the time and the engraved alarm clock will be facing up.

CUBE CLICK ALARM CLOCK



MAIN SELLING FEATURES

- A sleek minimal design for the bedside table
- The choice of 3x AAA batteries or mains operated
- Button controlled
- A choice of permanent display and sound activation mode
- A rotation of time, temperature and date or Permanent time display only
- A choice of 12hr or 24hr display

DISPLAY SET UP GUIDE

- This design looks really effective displayed with multiple colour options. We recommend having one colour option on permanent display and another on sound activation mode to best demonstrate the features within this design.

FAQ/PRODUCT CARE NOTICE

- Time, activating sound activation and setting the alarm are all controlled by the buttons on the back of the product.
- Should you need to dust the product, the Cube Click Alarm Clock can be wiped down with a damp cloth.

BRICK CLICK CLOCK



MAIN SELLING FEATURES

- A sleek minimal design for the bedside table
- USB to DC rechargeable
- Button controlled
- A choice of permanent display and sound activation mode
- A rotation of time, temperature and date or Permanent Time display only
- A choice of 12hr or 24hr display

DISPLAY SET UP GUIDE

- This design looks really effective displayed with multiple colour options. We recommend having one colour option on permanent display and another on sound activation mode to best demonstrate the features within this design

FAQ/PRODUCT CARE NOTICE

- Time, activating sound activation and setting the alarm is all controlled by the buttons on the back of the product.
- You can set up to 3 alarms with our Brick Click Clock.
- Should you need to dust the product, the Brick Click Clock can be wiped down with a damp cloth.

EDGE LIGHT ALARM CLOCK



MAIN SELLING FEATURES

- A unique and a must-have edgy design. It's a smart and stylish space saving way to have a clock and a light at the same time
- USB rechargeable
- Button controlled
- Flip over to turn on the light or switch off the alarm
- Dimming Feature
- Dual alarm setting, shake or press any button to snooze alarm
- Optional night time back light (Touch or Shake the unit to activate the back light to view during night time hours)

DISPLAY SET UP GUIDE

- This design looks really effective displayed with multiple colour options. We recommend having one colour option on permanent display and another flipped around to show the light function.
- As this is a very multifunctional design, we do recommend displaying with the POS which we will provide. This will help the customer to better understand the product.

FAQ/PRODUCT CARE NOTICE

- In order to turn the product on, simply plug in the USB cable and it will automatically turn on.
- Time, brightness and setting the alarm is all controlled by the buttons on the the product.
- You can set up to 2 alarms with our Edge Light Alarm Clock.
- To use as a desk light, simply flip it over to the light side
- Should you need to dust the product, the Edge Light Alarm Clock can be wiped down with a damp cloth.

Cool Summer Collection

- [Beyond Detachable Desk Fan/Light](#)

BEYOND DETACHABLE DESK FAN/LIGHT



MAIN SELLING FEATURES

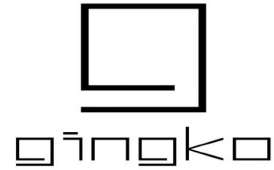
- A convenience, aesthetics and functional desk fan/light for the bedside table, office and living space
- USB-C rechargeable
- Button or remote controlled
- The magnetic remote control is attached onto the front of the fan for easy storage
- The Fan is detachable from the base, suede strap can be used to hang the fan up, perfect for outdoor activities/ camping
- In-built LED light in the fan
- 4 wind speed setting
- The fan and the light works separately

DISPLAY SET UP GUIDE

- This design looks really effective displayed with multiple colour options. We recommend having one colour option and detached from the base, lit up to best demonstrate the features within this design.
- As this is a very interactive designs, we do recommend displaying with the POS which we will provide. This will help the customer to better understand the product.

FAQ/PRODUCT CARE NOTICE

- Should you need to dust the product, the Beyond Detachable Desk Fan/Light can be wiped down with a damp cloth.



Thank you for your business.

Should you need any further assistance from us,
please don't hesitate to contact your account manager
or email to

contact@gingkodesign.co.uk

And of course,

we're only a phone call away on +44(0)1926676527